

Do Now (5 min)

1-6-11

- Please order the following terms from smallest size to largest size

Organism
System
Organ
Tissue

Cell
Organelle
Macromolecule
Molecule
Atom

Levels of Organization: From Atoms to Organisms

and

Major Body Cavities

1-6-11

Agenda

1/6/11

1. Do Now (5 min)
2. Objectives (2 min)
3. Levels of Organization (20 min)
4. Major Body Cavities (20 min)
5. Closing (5 min)
6. Exit Slip (5 min)
7. Participation Grades (3 min)

Objectives (3 min)

- Content (The objectives you'll master today)
- **SWBAT:**
 1. *Arrange the materials that make up the human body from smallest to largest*
 2. *Define each of the bodily materials*
 3. *Label the major body cavities*
- Language (How you will master the objectives)
- **By:**
 1. *By manipulating paper cut-outs*
 2. *Writing notes from the PowerPoint*
 3. *Reading about each cavity and writing the appropriate names on a worksheet*

Levels of Organization (20 min)

Objective: SWBAT: *Arrange the materials that make up the human body from smallest to largest by manipulating paper cut-outs.*

- The human body is made of chemicals
- All chemicals are made of atoms

Periodic Table of the Elements

hydrogen

alkali metals

alkali earth metals

transition metals

poor metals

nonmetals

noble gases

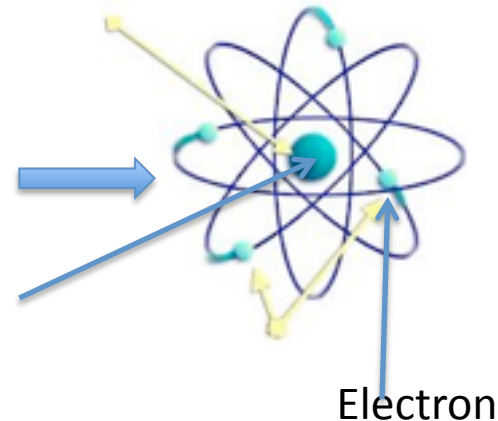
rare earth metals

1																	2			
H																			He	
3	4																	10		
Li	Be																			Ne
11	12																	18		
Na	Mg																			Ar
19	20	21	22	23	24	25	26	27	28	29	30	31	32	33	34	35	36			
K	Ca	Sc	Ti	V	Cr	Mn	Fe	Co	Ni	Cu	Zn	Ga	Ge	As	Se	Br	Kr			
37	38	39	40	41	42	43	44	45	46	47	48	49	50	51	52	53	54			
Rb	Sr	Y	Zr	Nb	Mo	Tc	Ru	Rh	Pd	Ag	Cd	In	Sn	Sb	Te	I	Xe			
55	56	57	72	73	74	75	76	77	78	79	80	81	82	83	84	85	86			
Cs	Ba	La	Hf	Ta	W	Re	Os	Ir	Pt	Au	Hg	Tl	Pb	Bi	Po	At	Rn			
87	88	89	104	105	106	107	108	109	110									118		
Fr	Ra	Ac	Unq	Unp	Unh	Uns	Uno	Une	Uun											
																			119	
																			120	
																			121	
																			122	
																			123	
																			124	
																			125	
																			126	
																			127	
																			128	
																			129	
																			130	
																			131	
																			132	
																			133	
																			134	
																			135	
																			136	
																			137	
																			138	
																			139	
																			140	
																			141	
																			142	
																			143	
																			144	
																			145	
																			146	
																			147	
																			148	
																			149	
																			150	
																			151	
																			152	
																			153	
																			154	
																			155	
																			156	
																			157	
																			158	
																			159	
																			160	
																			161	
																			162	
																			163	
																			164	
																			165	
																			166	
																			167	
																			168	
																			169	
																			170	
																			171	
																			172	
																			173	
																			174	
																			175	
																			176	
																			177	
																			178	
																			179	
																			180	
																			181	
																			182	
																			183	
																			184	
																			185	
																			186	
																			187	
																			188	
																			189	
																			190	
																			191	
																			192	
																			193	
																			194	
																			195	
																			196	
																			197	
																			198	
																			199	
																			200	
																			201	
																			202	
																			203	
																			204	
																			205	
																			206	
																			207	
																			208	
																			209	
																			210	
																			211	
																			212	
																			213	
																			214	
																			215	
																			216	
																			217	
																			218	
																			219	
																			220	
																			221	
																			222	
																			223	
																			224	
																			225	
																			226	
																			227	
																			228	
																			229	
																			230	
																			231	
																			232	
																			233	
																			234	
																			235	
																			236	
																			237	
																			238	
																			239	
																			240	
																			241	
																			242	
																			243	
																			244	
																			245	
																			246	
																			247	
																			248	
																			249	
																			250	
																			251	
																			252	
																			253	
																			254	
																			255	
																			256	
																			257	
																			258	
																			259	
																			260	
																			261	
																			262	
																			263	
																			264	
																			265	
																			266	
																			267	
																			268	
																			269	
																			270	
																			271	
																			272	
																			273	
																			274	
																			275	
																			276	
																			277	
																			278	
																			279	
																			280	
																			281	
																			282	
																			283	
																			284	
																			285	
																			286	
																			287	
																			288	
																			289	
																			290	
																			291	
																			292	
																			293	
																			294	
																			295	
																			296	
																			297	
																			298	
																			299	
																			300	
																			301	
																			302	
																			303	
																			304	
																			305	
																			306	
																			307	
																			308	
																			309	
																			310	
																			311	
																			312	
																			313	
																			314	
																			315	
																			316	
																			317	
																			318	
																			319	
																			320	
																			321	
																			322	
																			323	
																			324	
																			325	
																			326	
																			327	
																			328	
																			329	
																			330	
																			331	
																			332	
																			333	
																			334	
																			335	
																			336	
																			337	
																			338	
																			339	
																			340	
																			341	
																			342	
																			343	
																			344	
																			345	
																			346	
																			347	
																			348	
																			349	
																			350	
																			351	
																			352	
																			353	
																			354	
																			355	
																			356	
																			357	
																			358	
																			359	
																			360	
																			361	
																			362	
																			363	
																			364	
																			365	
																			366	
																			367	
																			368	
																			369	
																			370	
																			371	
																			372	
																			373	
																			374	
																			375	
																			376	
																			377	
																			378	
																			379	
																			380	
																			381	
																			382	
																			383	
																			384	
																			385	
																			386	
																			387	
																			388	
																			389	
																			390	
																			391	
																			392	
																			393	
																			394	
																			395	
																			396	
																			397	
																			398	
																			399	
																			400	
																			401	
																			402	
																			403	
																			404	
																			405	
																			406	
																			407	
																			408	
																			409	
																			410	
																			411	
																			412	
																			413	
																			414	
																			415	
																			416	
																			417	
																			418	
																			419	
																			420	
																			421	
																			422	
																			423	
																			424	
																			425	
																			426	
																			427	
																			428	
																			429	
																			430	
																			431	
																			432	
																			433	
																			434	
																			435	
																			436	
																			437	
																			438	
																			439	
																			440	
																			441	
																			442	
																			443	
																			444	
																			445	
																			446	
																			447	
																			448	
																			449	
																			450	
																			451	
																			452	
																			453	
																			454	
																			455	
																			456	
																			457	
																			458	
																			459	
																			460	
																			461	
																			462	
																			463	
																			464	
																			465	
																			466	
																			467	
																			468	
																			469	
																			470	
																			471	
																			472	
																			473	
																			474	
																			475	
																			476	
																			477	
																			478	
																			479	
																			480	
																			481	
																			482	
																			483	
																			484	
																			485	
																			486	
																			487	
																			488	
																			489	
																			490	
																			491	
																			492	
																			493	
																			494	
																			495	
																			496	
																			497	
																			498	
																			499	
																			500	
																			501	
																			502	
																			503	
																			504	
																			505	
																			506	
																			507	
																			508	
																			509	
																			510	
																			511	
																			512	
																			513	
																			514	
																			515	
																			516	
																			517	
																			518	
																			519	
																			520	
																			521	
																			522	
																			523	
																			524	
																			525	
																			526	
																			527	
																			528	
																			529	
																			530	
																			531	
																			532	
																			533	
																			534	
																			535	
																			536	
																			537	
																			538	
																			539	
																			540	
																			541	
																			542	
																			543	
																			544	
																			545	
																			546	
																			547	
																			548	
																			549	
																			550	
																			551	
																			552	
																			553	
																			554	
																			555	
																			556	
																			557	
																			558	
																			559	
																			560	
																			561	
																			562	
																			563	
																			564	
																			565	
																			566	
																			567	
																			568	
																			569	
																			570	
																			571	
																			572	
																			573	
																			574	
																			575	
																			576	
																			577	
																			578	
																			579	
																			580	
																			581	
																			582	
																			583	
																			584	
																			585	
																			586	
																			587	
																			588	
																			589	
																			590	
																			591	
																			592	
																			593	
																			594	
																			595	
																			596	
																			597	
																			598	
																			599	
																			600	
																			601	
																			602	
																			603	
																			604	
																			605	
																			606	
																			607	
																			608	
																			609	
																			610	
																			611	
																			612	
																			613	
																			614	
																			615	
																			616	
																			617	
																			618	
																			619	
																			620	
																			621	
																			622	
																			623	
																			624	
																			625	
																			626	
																			627	
																			628	
																			629	
																			630	
																			631	
																			632	
																			633	
																			634	
																			635	
																			636	
																			637	
																			638	
																			639	
																			640	
																			641	
																			642	
																			643	
																			644	
																			645	
																			646	
																			647	
																			648	
																			649	
																			650	
																			651	
																			652	
																			653	
																			654	
																			655	
																			656	
																			657	
																			658	
																			659	
																			660	
																			661	
																			662	
																			663	
																			664	
																			665	
																			666	
																			667	
																			668	
																			669	
																			670	
																			671	
																			672	
																			673	
																			674	
																			675	
																			676	
																			677	
																			678	
																			679	

A Hydrogen Atom

Proton

Electron



Levels of Organization (20 min)

Objective: SWBAT: *Arrange the materials that make up the human body from smallest to largest by manipulating paper cut-outs.*

- Using the paper cut outs...arrange them on your desk from:

Smallest and least
complex



Largest and most
complex

Once we have reviewed them in class...tape them into your notes! (make sure to leave room for the definitions)

Levels of Organization (20 min)

Objective: SWBAT: *Define each of the bodily materials by writing notes from the PowerPoint*



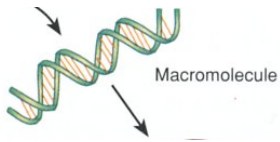
Atom

A tiny invisible particle, the “ingredients” of chemicals



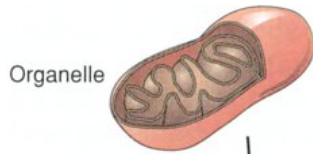
Molecule

An organized group of atoms



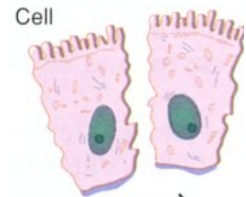
Macromolecule

An organized group of molecules



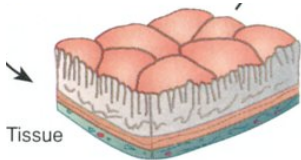
Organelle

-A part of a cell that has a specific job (Mitochondria = makes energy for cell)
-An “organ” of a cell



Cell

-The smallest functional unit of an organism

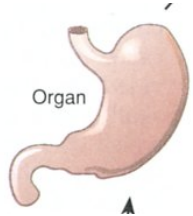


Tissue

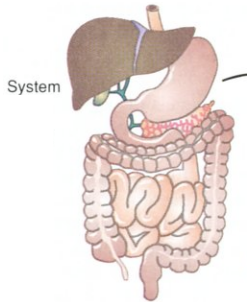
-Organized layers of cells

Levels of Organization (20 min)

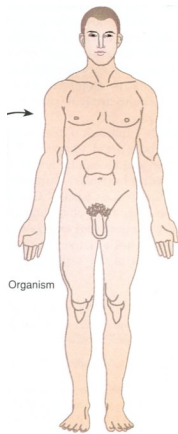
Objective: SWBAT: *Define each of the bodily materials by writing notes from the PowerPoint*



- A group of different tissues that perform a specialized function
- An organized group of atoms



- A group of organs that function closely together



- An individual living thing (all of the organ systems working together to maintain _____)

Now...Cell Size
Demonstration
Website!!!

Major Body Cavities (20 min)

Objective: SWBAT: *Label the major body cavities by reading about each cavity and writing the appropriate names on a worksheet*

Cavity: an empty space within a solid object

ORGANIZATION OF THE HUMAN BODY

The human organism is a complex structure composed of many parts. Its major features include several body cavities, layers of membranes within these cavities, and a variety of organ systems.

BODY CAVITIES

The human organism can be divided into an **axial portion**, which includes the head, neck, and trunk, and an **appendicular portion**, which includes the arms and legs. Within the axial portion there are two major cavities—a **dorsal cavity** and a larger **ventral cavity** (fig. 1.6). The organs within such a cavity are called *visceral organs*. The dorsal cavity can be subdivided into two parts—the **cranial cavity** within the skull, which houses the brain; and the **spinal cavity**, which contains the spinal cord and is surrounded by sections of the backbone (vertebrae). The ventral cavity consists of a **thoracic cavity** and an **abdominopelvic cavity**.

The thoracic cavity is separated from the lower abdominopelvic cavity by a broad, thin muscle, called the *diaphragm*. The wall of the thoracic cavity is composed of skin, skeletal muscles, and various bones. The viscera within it include the lungs.

The abdominopelvic cavity, which includes an upper abdominal portion and a lower pelvic portion, extends from the diaphragm to the floor of the pelvis. Its wall consists primarily of skin, skeletal muscles, and bones. The visceral organs within the *abdominal cavity* include the stomach, liver, spleen, gallbladder, and most of the small and large intestines.

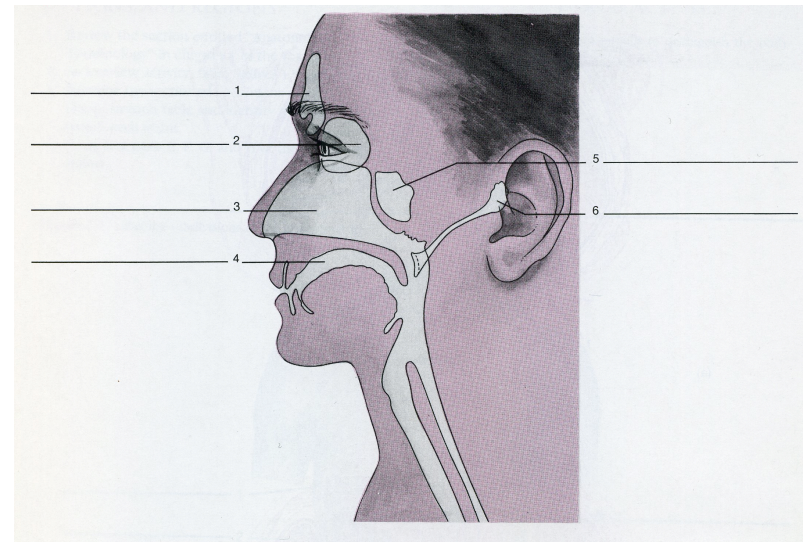
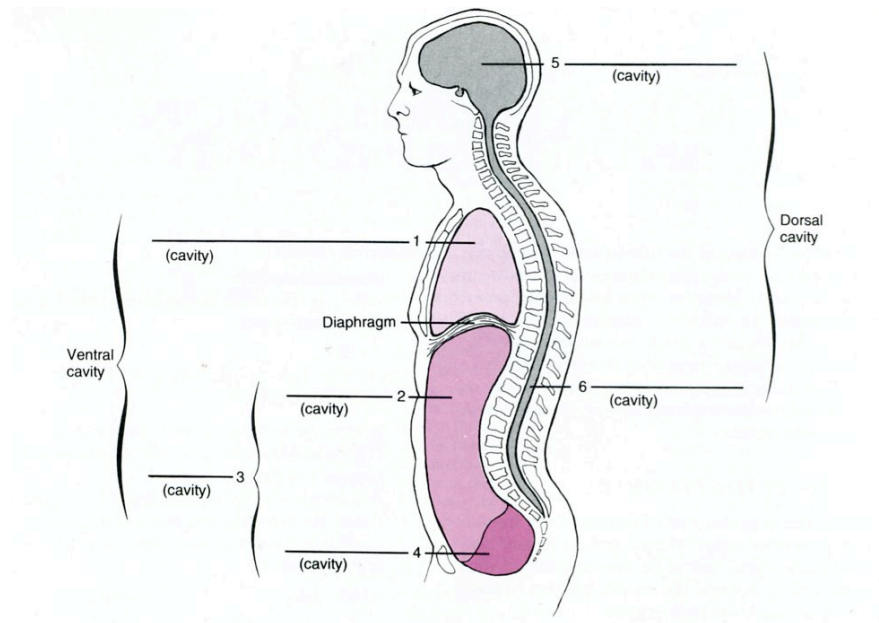
The *pelvic cavity* is the portion of the abdominopelvic cavity enclosed by the pelvic bones and below the pelvic brim (chapter 7). It contains the terminal portion of the large intestine, the urinary bladder, and the internal reproductive organs.

Smaller cavities within the head include the following:

1. **Oral cavity**, containing the teeth and tongue.
2. **Nasal cavity**, located within the nose and divided into right and left portions by a nasal septum. Several air-filled *paranasal sinuses* are connected to the nasal cavity (see chapter 7). These include the frontal and sphenoidal sinuses shown in figure 1.7.
3. **Orbital cavities**, containing the eyes and associated skeletal muscles and nerves.
4. **Middle ear cavities**, containing the middle ear bones (fig. 1.7).

Major Body Cavities (15 min)

Objective: SWBAT: *Label the major body cavities by reading about each cavity and writing the appropriate names on a worksheet*



Closing (5 min)

- Content (The objectives you'll master today)
- **SWBAT:**
 1. *Arrange the materials that make up the human body from smallest to largest*
 2. *Define each of the bodily materials*
 3. *Label the major body cavities*
- Language (How you will master the objectives)
- **By:**
 1. *By manipulating paper cut-outs*
 2. *Writing notes from the PowerPoint*
 3. *Reading about each cavity and writing the appropriate names on a worksheet*

Exit Slip (5 min)

Write your NAME, DATE, and BLOCK on a scrap paper, and answer the questions below.

1. What major body cavities are contained within the **axial portion** of the body? The **appendicular portion**?
2. List the human body materials in the following way
Smallest/least complex → largest/most complex

Participation Grades (5 min)

- Each day **YOU** will decide the grade you deserve...Though, I reserve the right to change these.
- Your 5-point daily participation grade is based on CLA's core-values:
 - CLA Students are S.M.A.R.T.
 - S = Self-Controlled
 - M = Motivated
 - A = Accountable
 - R = Respectful
 - T = Timely
 - One point for each core-value
 - (5 points possible each day)
- What do you deserve today?